

KEY

Instrument Legend

Alt 3600 6x9	1kW FEL
Alt 3600 6x12	1kW FEL
Alt 3600 6x16	1kW FEL
Source 4 19deg	750 W HPL
Source 4 26deg	750 W HPL
Source 4 36deg	750 W HPL
36 Deg Sea Changer	
PAR 64 WFL	1kW PAR
PAR 64 NSP	1kW PAR
1" SCOOP	
Source 4 PAR WFL	750W HPL
VL 500 WASH	
VL 2500 SPOT	
TECHNOBEAM IRIS	
3 Cell Sky Cyc	
SPEAKERS	

Accessories

- 10" Barndoor

Instrument Key

Propose	Color
Unit Number	Unit Number
Number	Number
Channel	Channel

- Notes**
1. INSTRUMENT PLACEMENT IS TYPICAL FOR THE FIRST ELECTRIC THROUGH THE FOURTH ELECTRIC FOR DIMENSIONS.
 2. INSTRUMENT PLACEMENT AND DIMENSIONS ARE TYPICAL FOR ALL ROOMS AND LADDERS. DIMENSIONS ARE SHOWN ON THE PLOT.
 3. THERE IS A STANDARD 18" BETWEEN INSTRUMENTS UNLESS OTHERWISE NOTED.
 4. ALL SKY CYC UNITS ARE 60" APART AT CENTERS UNLESS OTHERWISE NOTED.
 5. FINAL ROOM POSITIONS TO BE DETERMINED AT FOCUS. PLEASE HAVE A MINIMUM OF 100' EXTRA CABLE AVAILABLE FOR ROOMS.
 6. ROOM PLACEMENT FROM PLASTER: ROOM 1: 1'-0" ROOM 2: 6'-4" (SR ROOM MUST BE ABLE TO ROLL OUT OF THE WAY OF SCENE CHANGES) ROOM 3: 18'-5"
 7. COVES, ELECTRICS AND BOX ROOMS ARE NOT IN SCALE IN RELATION TO THE PLASTER LINE. PLEASE SEE SECTION PLOT FOR INFORMATION.
 8. FALSE PROSCENIUM FIXTURES ARE TO BE PLACED IN THE TOP SECTION OF THE POSITION.
 9. PLEASE SEE LD OR LD TEAM FOR PLACEMENT OF GROUNDROWS.
 10. PLEASE SEE SECTION PLOT FOR CLARIFICATION ON HANGING INFORMATION AND CONSULT WITH LD OR LD TEAM.
 11. PLEASE HAVE R119 AND BARNDOORS READY AT FOCUS.
 12. BORDER TRIM HEIGHTS ARE TAKEN FROM THE TOP OF THE PIPES. BORDER FABRIC HEIGHTS IS 12' - 0".
 13. PLEASE DROP TWO SPARE CIRCUITS FOR EACH LADDER POSITION.
 14. 3A ELECTRIC VERTICAL 60" PIPE DOWN IS FOR TECHNOBEAMS HUNG VERTICALLY. SEE SECTION AND LD TEAM FOR CLARIFICATION.
 15. FOOTLIGHTS ARE SPACED 26" AND 60" FROM CENTER ON BOTH SIDES OF THE EDGE OF THE STAGE.
 16. PIPE 1A HAS BEEN DRAWN NOT IN RELATION TO THE PLASTER LINE FOR CLARITY.

Plate Breakdown

PLATE ONE: LIGHTING PLOT

PLATE TWO: LIGHTING SECTION 1 WITH BUGGY RIDE, YODER YARD, YODER PARLOR, AND RIVER FARM SCENES

PLATE THREE: LIGHTING SECTION 2 WITH KITCHEN, BEDROOM, YODER KITCHEN, AND CARNIVAL SCENES AND SIMPLE SECTION WITH BACK LIGHT, TOP LIGHT AND FRONT LIGHT

THEATRE DANCE

SPRING 2012 - STUMP THEATRE
RESIDENT LIGHTING DESIGNER: JAKYUNG SEO
RESIDENT MASTER ELECTRICIAN: JASON POTTS
DIRECTOR: TERRI KENT
LIGHTING DESIGNER: JAKYUNG SEO
ASSOCIATE LIGHTING DESIGNER: CYNDI HOFFMAN
ASST. LIGHTING DESIGNER: TOM WEST
MASTER ELECTRICIAN: MARGARET PEEBLES
SCENIC DESIGNER: RAYNETTE H. SMITH
TECHNICAL DIRECTION: STEVE PALINA
COSTUME DESIGNER: APRIL ROCK
DRAWING BY: CYNDI HOFFMAN (517)-658-2589
CHOFFM17@KENT.EDU

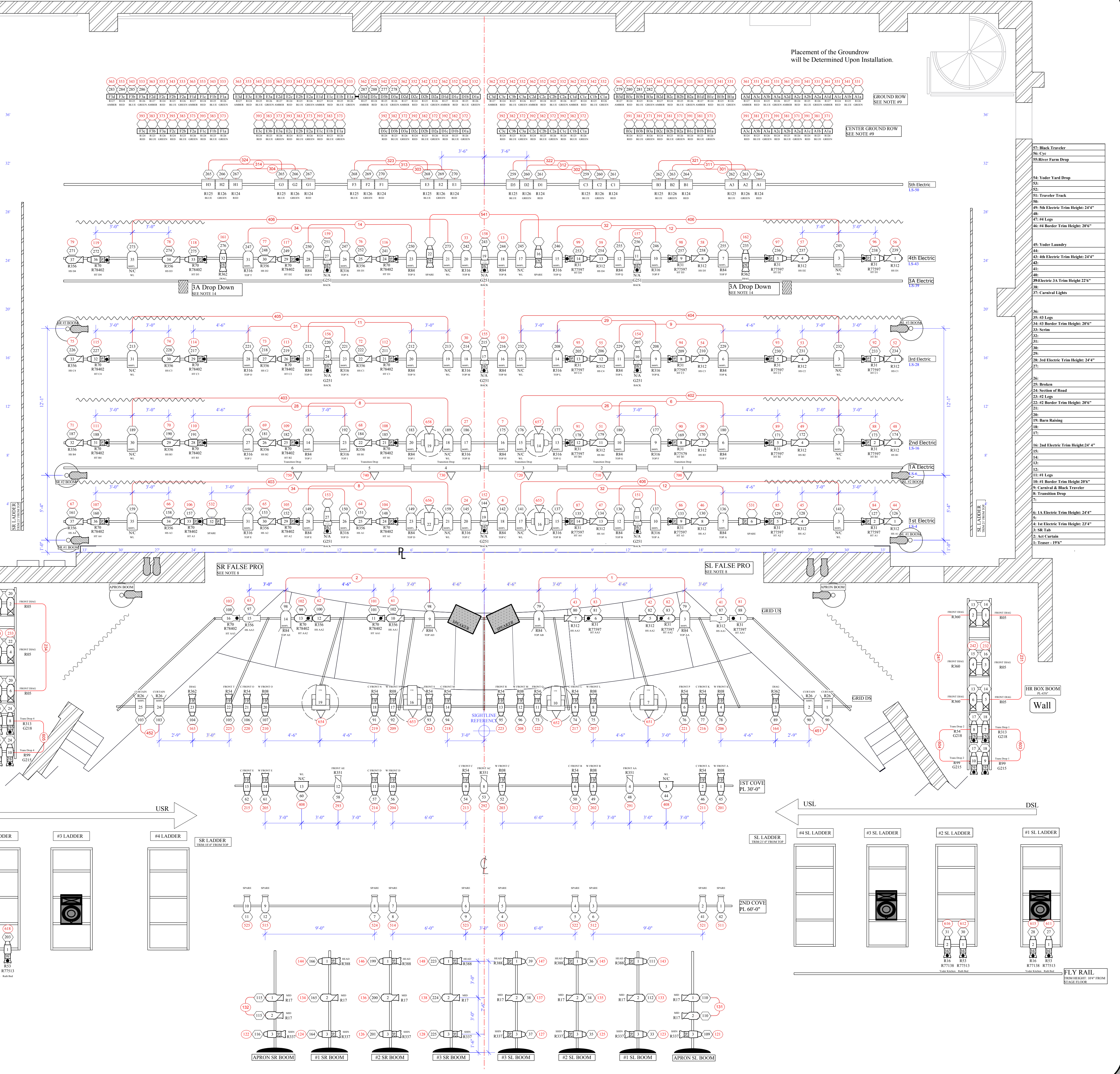
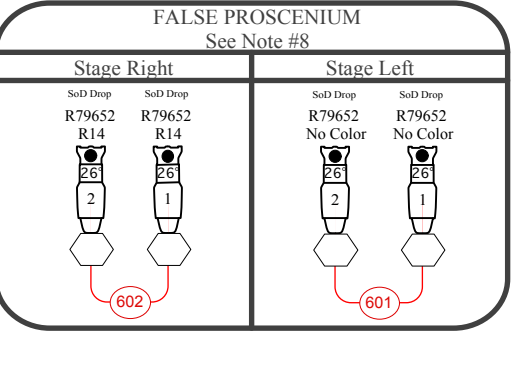
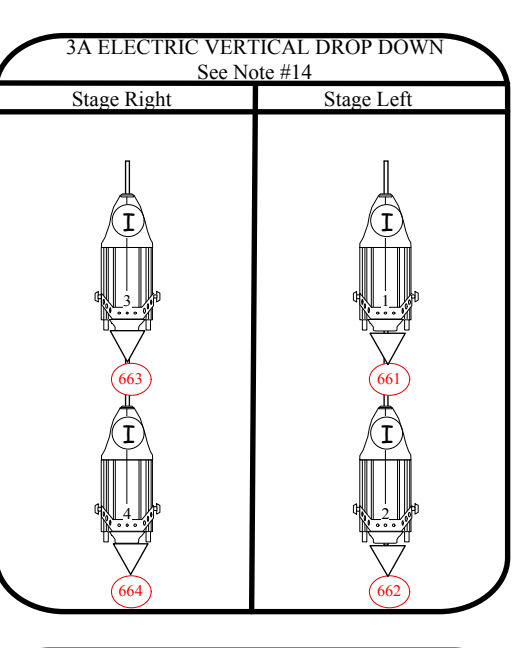
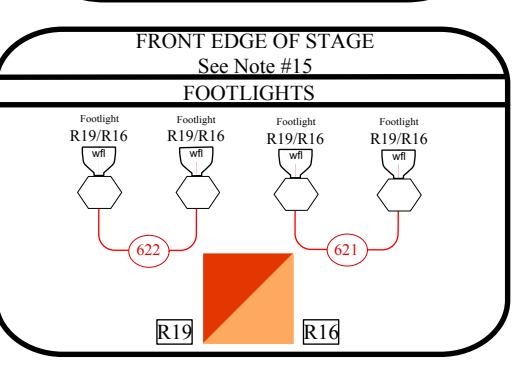
SCALE: 1/4"=1'0"
V.5
FILE: P&F PLOT V.5
LAST UPDATE: OCT-06-2013

PLAIN AND FANCY

E. Turner Stump Theatre

TEXTURE BREAKDOWN

WARM HIGH TEXTURE R7979	BACK TEXTURE G251	COOL HIGH TEXTURE R79402
SECTION OF ROAD R79652	YODER KITCHEN R77138	MUTHS BEDROOM R77138
TRANSITION DROP LEAVES G216	TRANSITION DROP TRUNKS G216	



INSTRUMENT INVENTORY
MISSING INSTRUMENTS WILL BE PULLED FROM THE LIGHTING LAB

Instruments	Num in Inventory	Used	Remaining
ETC Source 36" w SeaChanger	8	9	-1
Source 4 19deg	18	16	2
Source 4 26deg	80	64	16
Source 4 36deg	20	8	12
Alt 3600 6x9	10	4	6
Alt 3600 6x12	74	51	23
Alt 3600 6x16	26	13	13
Alt 3600 6x22	18	10	8
S4 PAR WFL	4	0	-4
PAR 64	103	65	38
VL 500 Wash	4	4	0
VL 2500	4	4	0
Technobeam-I	4	4	0

